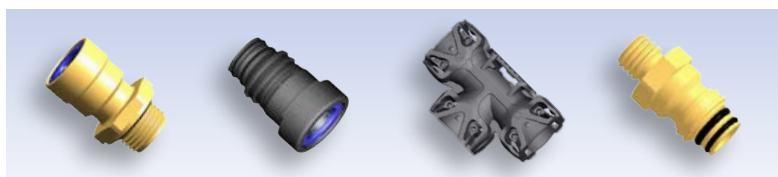


COUPLING CATALOGUE

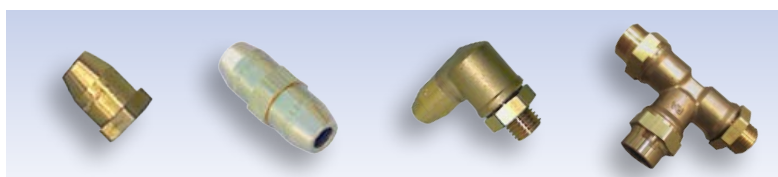
Push-In, Standard, Conventional, Accessories



WABCO



Push-in and Composite Building Block 4



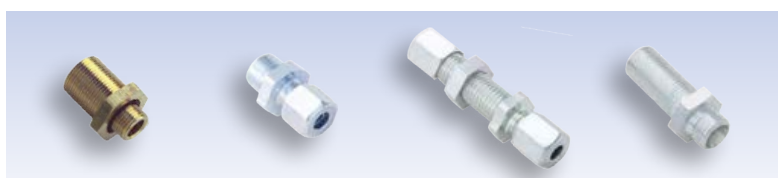
Standard Connectors 12



Quick Connection Systems P5 16



Quick Connection Systems NG 20



Conventional Couplings - Straight Connectors 22



Conventional Couplings - Elbows 28

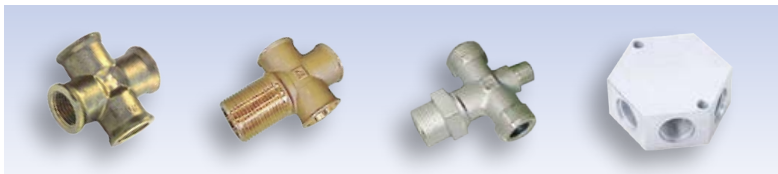
© WABCO 2015

WABCO

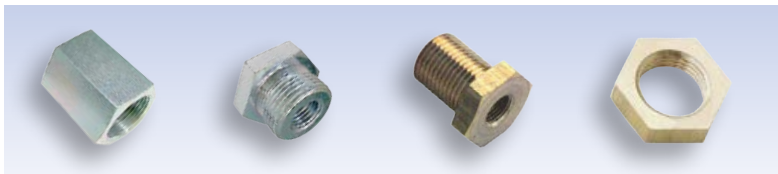
We reserve the right to any changes.
Edition 02.15 (en)
815 010 080 3



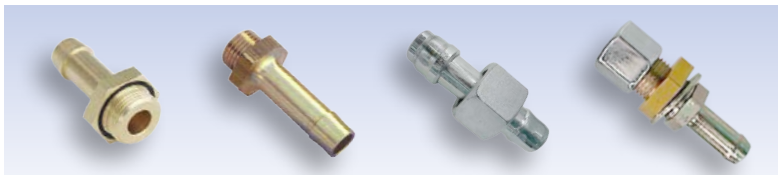
Conventional Couplings - T Connectors 34



Conventional Couplings - Distribution Blocks 38



Conventional Couplings - Nuts / Reducer 40



Conventional Couplings - Hose Fittings 44



Pipe Couplings - Air auxiliary 46



Test Connections 48

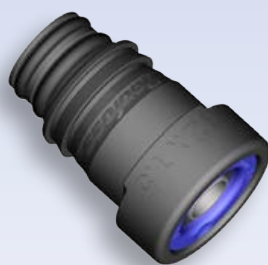
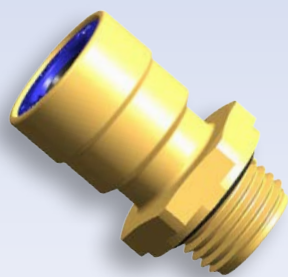


Accessories 50



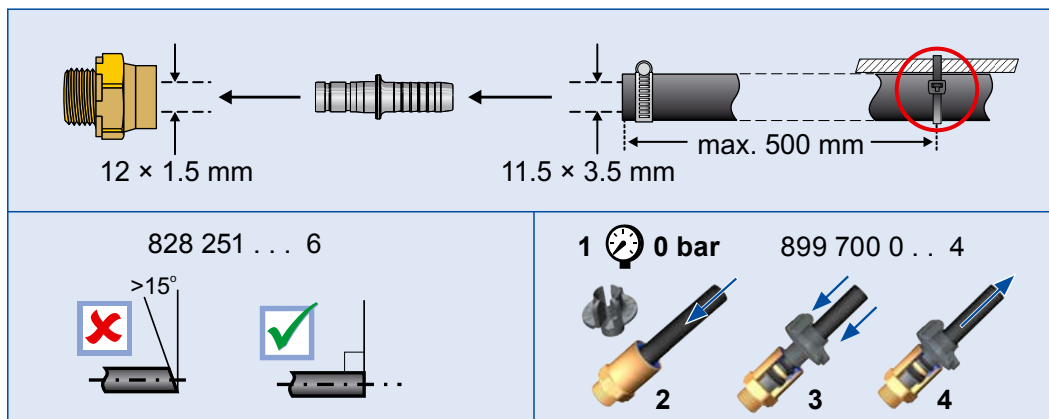
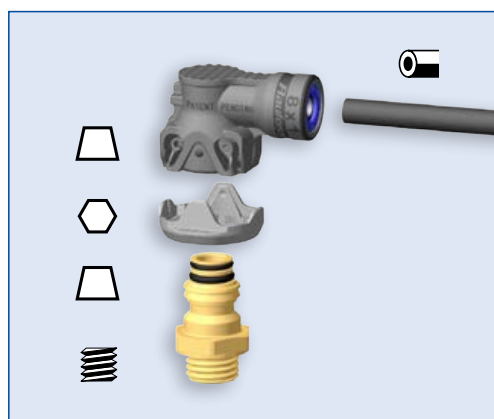
Pipes, Hoses, Tubes 56

PUSH-IN AND COMPOSITE BUILDING BLOCK



Coupling Catalogue

Push-in and Composite Building Block



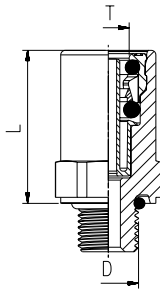
Icon	6 x 1.0 8 x 1.0	6 x 1.0 - 12 x 1.5	12 x 1.5 15 x 1.5 16 x 2.0

Ø	"New Line"	PA
6 x 1.0	80 N / 19.5 mm	30 mm
8 x 1.0	90 N / 20.5 mm	40 mm
10 x 1.0	100 N / 24.0 mm	60 mm
10 x 1.25	100 N / 24.0 mm	60 mm
10 x 1.5	100 N / 24.0 mm	60 mm
12 x 1.5	110 N / 25.0 mm	60 mm
15 x 1.5	125 N / 27.0 mm	90 mm
16 x 2.0	130 N / 27.0 mm	95 mm
18 x 2.0	130 N / 27.0 mm	100 mm

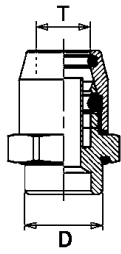
Wrench	 SMALL REGULAR HEAVY DUTY		
16	899 700 111 4	-	-
18	899 700 112 4	899 700 114 4	-
20	-	899 700 115 4	-
22	899 700 113 4	899 700 116 4	899 700 118 4
28	-	899 700 117 4	899 700 119 4



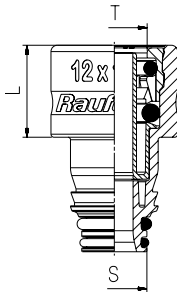
Push-in and Composite Building Block



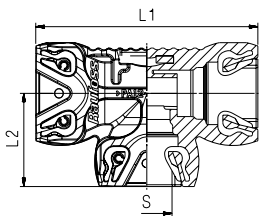
\varnothing T	D	L	Hex.	WABCO #
6×1.0	M10×1.0	25	16	893 800 801 2
6×1.0	M12×1.5	24	18	893 800 802 2
6×1.0	M14×1.5	16	20	893 800 803 2
6×1.0	M16×1.5	12	22	893 800 082 2
6×1.0	M22×1.5	12	28	893 800 804 2
8×1.0	M10×1.0	27	18	893 800 805 2
8×1.0	M12×1.5	26	18	893 800 007 2
8×1.0	M14×1.5	25	20	893 800 806 2
8×1.0	M16×1.5	17	22	893 800 001 2
8×1.0	M22×1.5	13	28	893 800 005 2
10×1.0	M12×1.5	28	20	893 800 807 2
10×1.0	M14×1.5	28	22	893 800 816 2
10×1.0	M16×1.5	28	22	893 800 009 2
10×1.0	M22×1.5	17	28	893 800 808 2
10×1.25	M12×1.5	28	20	893 800 809 2
10×1.25	M16×1.5	28	22	893 800 812 2
10×1.25	M22×1.5	17	28	893 800 821 2
10×1.5	M12×1.5	28	20	893 800 817 2
10×1.5	M16×1.5	28	22	893 800 818 2
10×1.5	M22×1.5	17	28	893 800 819 2
12×1.5	M12×1.5	31	22	893 800 813 2
12×1.5	M16×1.5	30	22	893 800 002 2
12×1.5	M22×1.5	19	28	893 800 008 2
15×1.5	M16×1.5	33	28	893 800 820 2
15×1.5	M22×1.5	31	28	893 800 004 2
16×2.0	M16×1.5	33	28	893 800 814 2
16×2.0	M22×1.5	31	28	893 800 003 2



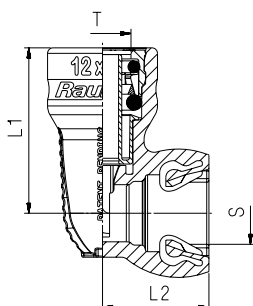
\varnothing T	D	Hex.	WABCO #
9×1.5	M12×1.5	20	893 800 009 0
10×1.0	M10×1.0	20	893 800 034 0
10×1.25	M14×1.5	20	893 803 043 0
10×1.5	1/4 - 18 NPTF	20	893 800 036 0
10×1.5	M10×1.0	20	893 820 002 0
10×1.5	M14×1.5	20	893 803 992 0
11×1.5	M16×1.5	22	893 800 037 0
12×1.5	M10×1.0	22	893 820 004 0
12×1.5	M14×1.5	22	893 803 031 0
15×1.5	M14×1.5	26	893 800 038 0
15×1.5	M26×1.5	32	893 803 990 0
15×2.0	M22×1.5	28	893 803 033 0
16×2.0	M12×1.5	26	893 800 042 0
16×2.0	M14×1.5	26	893 800 043 0
18×2.0	M16×1.5	30	893 803 983 0
18×2.0	M22×1.5	28	893 803 013 0
18×2.0	M26×1.5	32	893 803 989 0



S	\varnothing T	L	WABCO #
S	6×1.0	4	893 800 094 2
R	6×1.0	4	893 800 095 2
S	8×1.0	10	893 800 096 2
R	8×1.0	8	893 800 091 2
R	10×1.0	11	893 800 092 2
R	10×1.25	11	893 800 100 2
R	10×1.5	11	893 800 101 2
R	12×1.5	18	893 800 093 2
HD	12×1.5	18	893 800 097 2
HD	15×1.5	21	893 800 098 2
HD	16×2.0	21	893 800 099 2

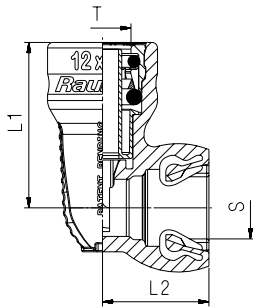








S (3×)	L1	L2	WABCO #
S	53	22	893 503 071 4
R	62	26	893 503 072 4
HD	73	31	893 503 073 4

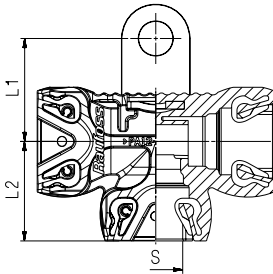




S	\varnothing T	L1	L2	WABCO #
S	6×1.0	32	18	893 920 321 2
R	6×1.0	31	21	893 920 322 2
S	8×1.0	34	18	893 920 323 2
R	8×1.0	33	21	893 920 324 2
R	10×1.0	35	24	893 920 325 2

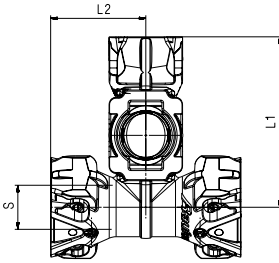
Push-in and Composite Building Block






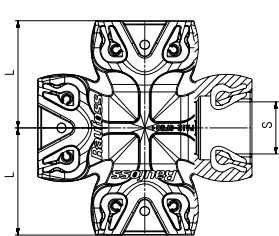
 S	\varnothing T	\longleftrightarrow L1	\longleftrightarrow L2	WABCO #
 R	10×1.25	35	24	893 920 379 2
 R	10×1.5	35	24	893 920 380 2
 R	12×1.5	37	24	893 920 326 2
 HD	15×1.5	46	24	893 920 327 2
 HD	16×2.0	46	24	893 920 328 2






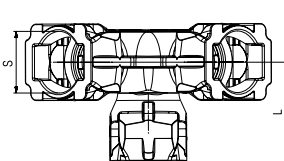
 S (3×)	\longleftrightarrow L1	\longleftrightarrow L2	WABCO #
 R	27	26	893 503 070 4







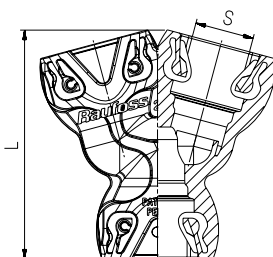
 S (4×)	\longleftrightarrow L1	\longleftrightarrow L2	WABCO #
 R	50	28	893 905 801 4
 HD	59	33	893 905 802 4






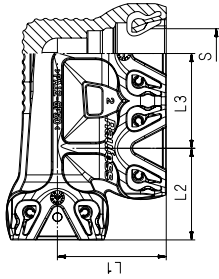
 S (4×)	\longleftrightarrow L	WABCO #
 R	29	893 550 012 4
 HD	34	893 550 013 4



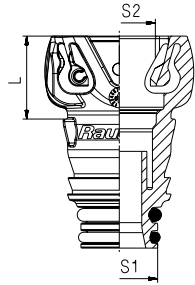
 S (3×)	\longleftrightarrow L	WABCO #
 S	24	893 550 016 4
 R	28	893 550 017 4
 HD	33	893 550 018 4



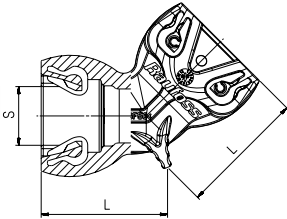
 S (3×)	\longleftrightarrow L	WABCO #
 S	47	893 400 866 4
 R	55	893 400 867 4



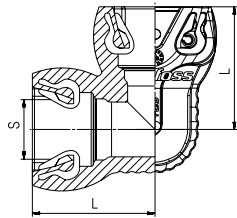
S (3x)	\varnothing T	\longleftrightarrow L1	\longleftrightarrow L2	WABCO #
	27	22	23	893 997 794 4
	31	26	27	893 997 795 4
	36	31	32	893 997 796 4



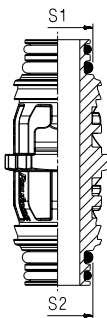
S1	S2	\longleftrightarrow L1	WABCO #
		15	893 920 241 4



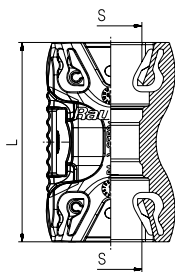
S (2x)	\longleftrightarrow L	WABCO #
	22	893 400 861 4
	25	893 400 862 4
	30	893 400 863 4



S (2x)	\longleftrightarrow L	WABCO #
	29	893 400 864 4
	34	893 400 865 4

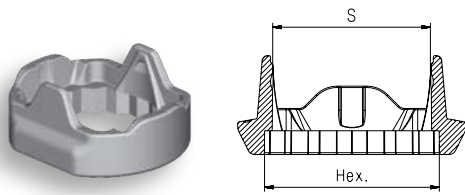













S1	S2	Hex.	WABCO #	Rotolock
		18	893 997 789 4	899 700 112 4
		18	893 997 790 4	899 700 112 4
		18	893 997 791 4	899 700 114 4
		18	893 997 792 4	899 700 114 4
		22	893 997 793 4	899 700 118 4

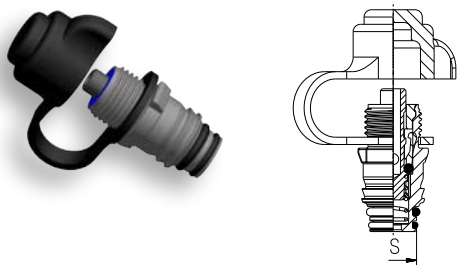


S (2x)	\longleftrightarrow L	WABCO #
	39	893 997 787 4
	45	893 997 788 4

Push-in and Composite Building Block

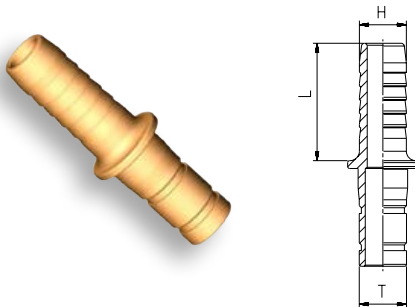


 S	 Hex.	WABCO #
 S	16	899 700 111 4
 S	18	899 700 112 4
 S	22	899 700 113 4
 R	18	899 700 114 4
 R	20	899 700 115 4
 R	22	899 700 116 4
 R	28	899 700 117 4
 HD	22	899 700 118 4
 HD	28	899 700 119 4



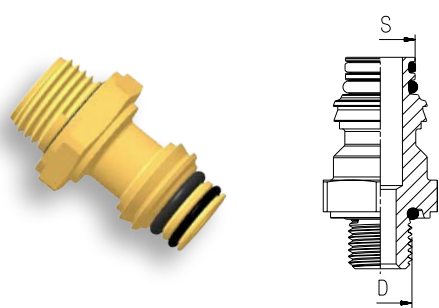
 S	WABCO #
 R	893 880 011 0
















Standard: ISO 3583

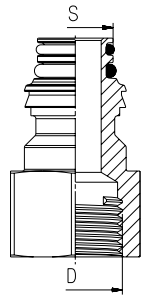


\varnothing T	H	L	WABCO #
12×1.5	11	30	893 129 467 4

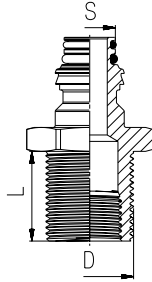
Application: Only for push-in 893 800 813 2, 893 800 002 2, 893 800 008 2 (New-Line Push-in Couplings Tube Size 12×1.5)



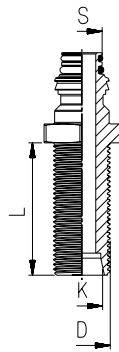
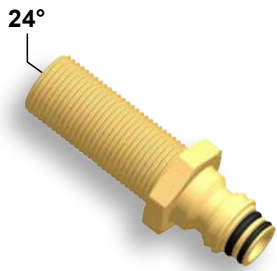
 S	 D	 Hex.	WABCO #	 Rotolock
 S	M10×1.0	16	893 920 311 2	899 700 111 4
 R	M10×1.0	18	893 920 312 2	899 700 114 4
 S	M12×1.5	18	893 920 313 2	899 700 112 4
 R	M12×1.5	18	893 920 314 2	899 700 114 4
 S	M14×1.5	20	893 920 369 2	899 700 115 4
 R	M14×1.5	20	893 920 315 2	899 700 115 4
 S	M16×1.5	22	893 920 316 2	899 700 113 4
 R	M16×1.5	22	893 920 317 2	899 700 116 4
 HD	M16×1.5	22	893 920 319 2	899 700 118 4
 R	M22×1.5	28	893 920 318 2	899 700 117 4
 HD	M22×1.5	28	893 920 320 2	899 700 119 4



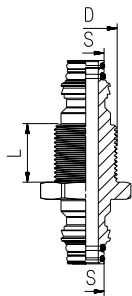
S	D	Hex.	WABCO #	Rotolock
	M12×1.5	18	893 920 364 2	899 700 114 4
	M14×1.5	18	893 920 370 2	899 700 114 4
	M16×1.5	22	893 920 365 2	899 700 116 4
	M22×1.5	28	893 920 366 2	899 700 117 4



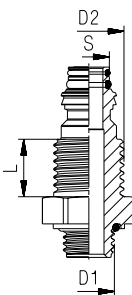
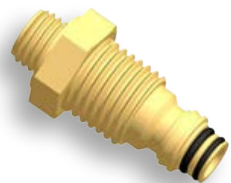
S	D1	D2	L	Hex.	WABCO #	Rotolock
	M18×1.5	M12×1.5	14	22	893 770 017 2	899 700 116 4
	M22×1.5	M16×1.5	23	28	893 770 145 2	899 700 117 4
	M28×1.5	M22×1.5	24	34	893 770 151 2	-



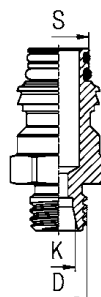
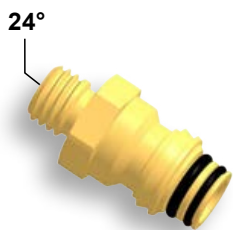
S	D	L	K	Hex.	WABCO #	Rotolock
	M16×1.5	35	24°	22	893 770 016 2	899 700 116 4
	M18×1.5	42	24°	24	893 770 149 2	-



S	D1	L	Hex.	WABCO #	Rotolock
	M22×1.5	20	28	893 770 146 2	899 700 117 4
	M22×1.5	20	28	893 770 150 2	899 700 119 4

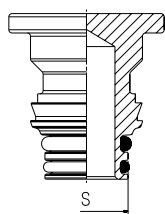


S	D1	D2	L	Hex.	WABCO #
	M16×1.5	M22×1.5	18	28	893 770 147 2
	M22×1.5	M22×1.6	18	28	893 770 148 2

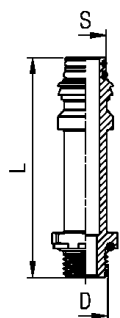
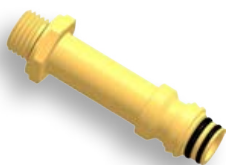


S	D1	K	Hex.	WABCO #	Rotolock
	M12×1.5	24°	18	893 920 367 2	899 700 114 4

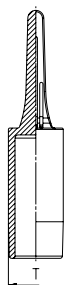
Push-in and Composite Building Block



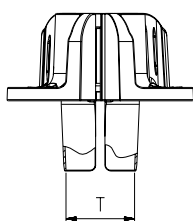
S	WABCO #
S	893 920 311 4
R	893 920 312 4
HD	893 920 313 4



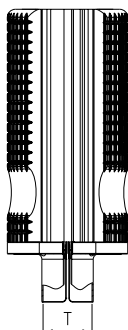
S	D	L	Hex.	WABCO #
R	M14×1.5	55	20	893 920 368 2



T	WABCO #
6×1.0	899 022 023 4
8×1.0	893 022 001 4
12×1.5	893 022 016 4
15×1.5	893 022 017 4
16×2.0	893 022 018 4

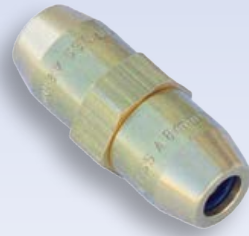
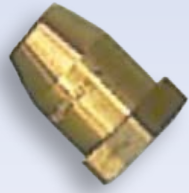


T	WABCO #
6×1.0	899 700 017 4
8×1.0	899 700 001 4
10×1.0 10×1.25 10×1.5	899 700 007 4
12×1.5	899 700 002 4
15×1.5	899 700 008 4
16×2.0	899 700 003 4



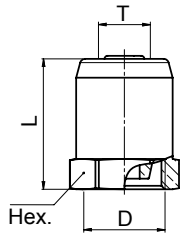
T	WABCO #
6×1.0	899 700 011 4
8×1.0	899 700 012 4
10×1.0 10×1.25 10×1.5	899 700 013 4
12×1.5	899 700 014 4
15×1.5	899 700 015 4
16×2.0	899 700 016 4

STANDARD CONNECTORS

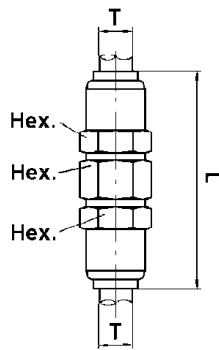


Coupling Catalogue

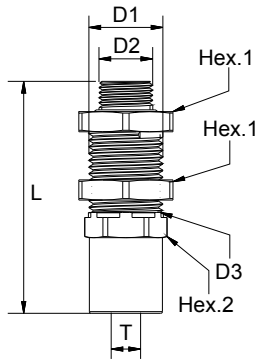
Standard Connectors



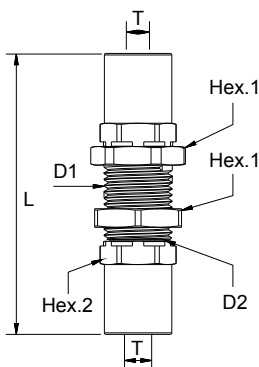
\varnothing T	D	L	Hex.	WABCO #
6×1.0	M12×1.5	~23.3	15	893 771 236 4
8×1.0	M14×1.5	~23.3	17	893 771 234 4
10×1.0	M16×1.5	~25.8	19	893 771 233 4
12×1.5	M18×1.5	~26.8	22	893 771 235 4



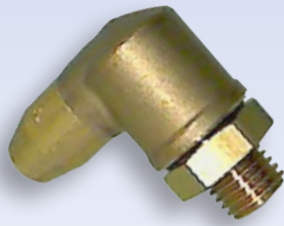
\varnothing T	L	Hex.	WABCO #
15×2.0	79	28	893 831 226 0



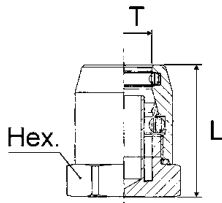
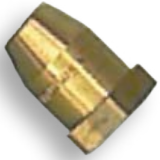
\varnothing T	D			L	Hex.		WABCO #
	1	2	3		1	2	
10×1.0	M16×1.5	M22×1.5	M16×1.5	67	28	22	893 831 219 0
12×1.5	M16×1.5	M22×1.5	M16×1.5	69	28	22	893 831 261 0
12×1.5	M22×1.5	M22×1.5	M16×1.5	69	28	22	893 831 269 0



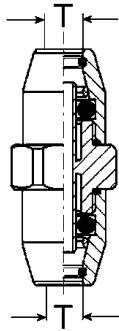
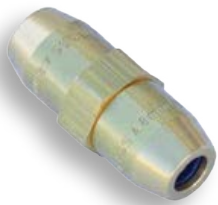
\varnothing T	D		L	Hex.		WABCO #
	1	2		1	2	
12×1.5	M22×1.5	M16×1.5	90	28	22	893 831 217 0



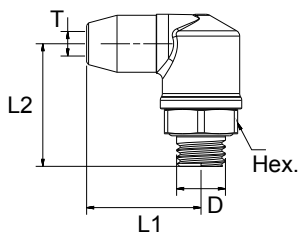
Standard Connectors



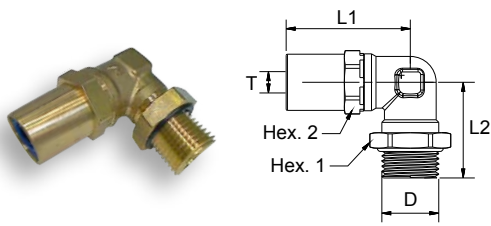
Ø T	L	Hex.	WABCO #
6×1.0	21.6	16	893 800 027 0
12×1.5	28.5	22	893 800 028 0



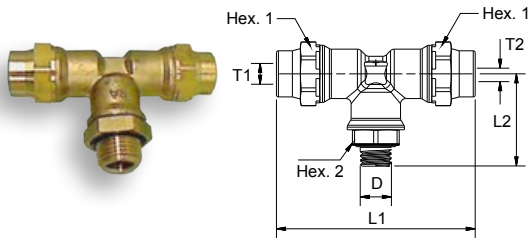
Ø T	WABCO #
4×1.0	893 800 045 0
6×1.0	893 803 034 0
8×1.0	893 803 037 0
10×1.0	893 803 038 0
10×1.25	893 800 046 0
10×1.5	893 803 991 0
11×1.5	893 800 047 0
12×1.5	893 803 039 0
15×1.5	893 803 041 0
16×2.0	893 803 046 0
18×2.0	893 800 051 0



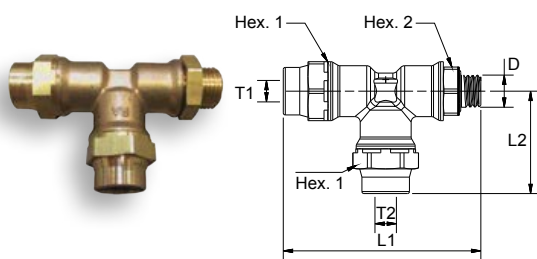
Ø T	D	L1	L2	Hex.	WABCO #
6×1.0	M12×1.5	28.1	30	18	893 831 223 0
8×1.0	M12×1.5	29	33	18	893 831 291 0
8×1.0	M22×1.5	29	34	28	893 831 292 0
8×1.0	M16×1.5	29	34	22	893 831 293 0
10×1.0	M12×1.5	32,6	33	18	893 831 263 0
10×1.0	M16×1.5	32.6	34	22	893 831 297 0
10×1.0	M22×1.5	32.6	34	28	893 831 298 0
12×1.5	M22×1.5	34	34	28	893 831 294 0
12×1.5	M16×1.5	34	34	22	893 831 295 0
15×1.5	M22×1.5	36	35.5	28	893 831 273 0



Ø T	D	L		Hex.		WABCO #
		1	2	1	2	
10×1.0	M16×1.5	45	37	22	22	893 831 274 0
10×1.0	M22×1.5	46	37	28	28	893 831 279 0
12×1.5	M22×1.5	48	37	28	22	893 831 264 0
12×1.5	M16×1.5	47	37	22	22	893 831 299 0
15×1.5	M16×1.5	48.5	37	22	22	893 831 215 0
15×1.5	M22×1.5	55.5	40	28	28	893 831 267 0
16×2.0	M22×1.5	55.5	40	28	28	893 831 216 0
18×2.0	M22×1.5	55.5	40	28	28	893 831 278 0

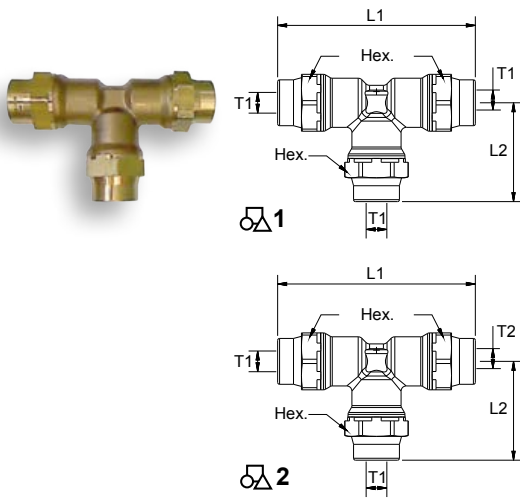


Ø T		D	L		Hex.		WABCO #
1	2		1	2	1	2	
8×1.0	8×1.0	M16×1.5	76.5	36.5	22	22	893 831 283 0
8×1.0	8×1.0	M22×1.5	76.5	36.5	22	28	893 831 275 0
10×1.0	10×1.0	M22×1.5	100	36.5	22	28	893 831 266 0
10×1.0	10×1.0	M16×1.5	100	36.5	22	22	893 831 281 0
12×1.5	8×1.0	M22×1.5	90	36.5	22	28	893 831 212 0
12×1.5	12×1.5	M16×1.5	103	36.5	22	22	893 831 271 0



Ø T		D	L		Hex.		WABCO #
1	2		1	2	1	2	
8×1.0	8×1.0	M12×1.5	74	38	22	18	893 831 211 0
8×1.0	8×1.0	M16×1.5	75	38	22	22	893 831 285 0
8×1.0	8×1.0	M22×1.5	75	38	22	28	893 831 284 0
8×1.0	12×1.5	M22×1.5	75	51.5	22	28	893 831 289 0
10×1.0	10×1.0	M16×1.5	86	50	22	22	893 831 272 0
12×1.5	10×1.0	M22×1.5	88	50	22	28	893 831 213 0
12×1.5	12×1.5	M22×1.5	88	51.5	22	28	893 831 277 0

Standard Connectors



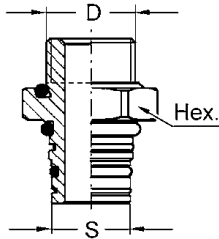
Ø T		L		Hex.	WABCO #
1	2	1	2		
8×1.0	-	76	38	22	893 831 296 0
8×1.0	6×1.0	72	38	22	893 831 214 0
10×1.0	-	100	50	22	893 831 268 0
12×1.5	-	103	51.5	22	893 831 265 0
15×1.5	-	109	54.5	28	893 831 288 0

QUICK CONNECTION SYSTEMS P5

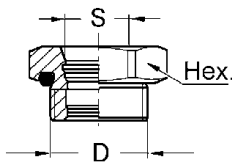
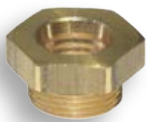


Coupling Catalogue

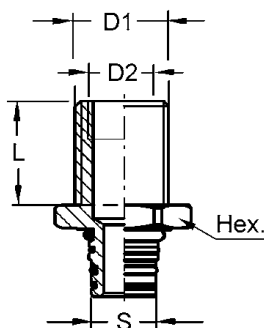
Quick Connection Systems P5



🌀 D	S	🔧 Hex.	WABCO #
M10×1.5	P5	-	893 920 342 4
M12×1.5	P5	18	893 129 191 2
M14×1.5	P5	20	893 820 887 2
M16×1.5	P5	22	893 129 192 2
M22×1.5	P5	28	893 129 193 2
M26×1.5	P5	32	893 120 009 4
1/8" - 27NPTF	P5	20	893 820 001 2
1/4" - 18NPTF	P5	-	893 129 453 2
3/8" - 18NPTF	P5	-	893 320 854 2
G1/4"	P5	20	893 905 794 2



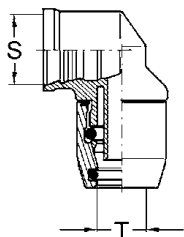
🌀 D	S	🔧 Hex.	WABCO #
M22×1.5	P5	28	893 803 981 2



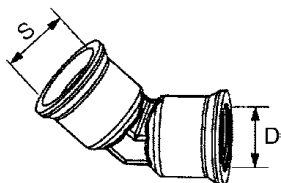
🌀 D1	🌀 D2	S	↔ L	🔧 Hex.	WABCO #
M18×1.5	K24° - 12	P5	34	24	893 129 444 2
M22×1.5	M16×1.5	P5	24	28	893 129 196 2
M22×1.5	3/8" - 18NPTF	P5	24	28	893 120 015 4



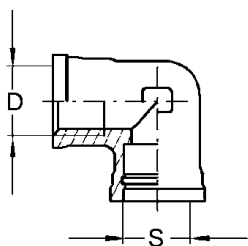
Quick Connection Systems P5



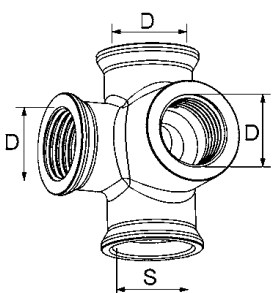
\varnothing T	S	WABCO #
6×1.0	P5	893 803 981 0
8×1.0	P5	893 831 177 0
10×1.0	P5	893 831 178 0
10×1.25	P5	893 831 501 0
10×1.5	P5	893 401 002 0
12×1.5	P5	893 831 182 0
15×1.5	P5	893 831 181 0
15×2.0	P5	893 830 000 0
16×2.0	P5	893 831 183 0



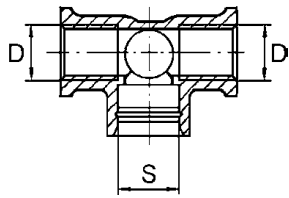
D	S	WABCO #
M16×1.5	P5	893 401 797 4




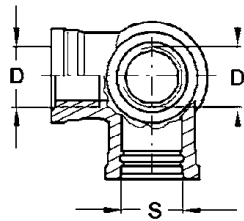
D	S	WABCO #
M12×1.5	P5	893 401 827 2
M16×1.5	P5	893 401 015 2




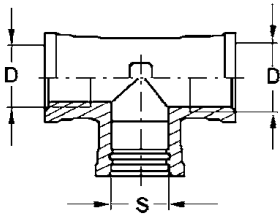
D	S	WABCO #
M16×1.5	P5	893 920 000 4




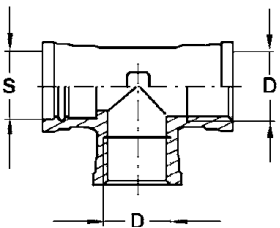
 D	S	WABCO #
M16×1.5	P5	893 550 002 4




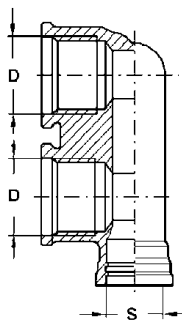
 D	S	WABCO #
M16×1.5	P5	893 401 294 4



 D	S	WABCO #
M12×1.5	P5	893 501 195 4
M16×1.5	P5	893 501 196 4

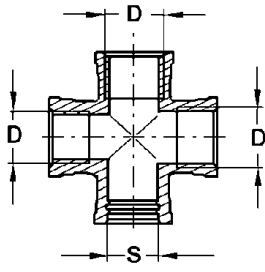



 D	S	WABCO #
M12×1.5	P5	893 501 193 4
M16×1.5	P5	893 501 194 4



 D	S	WABCO #
M16×1.5	P5	893 401 818 4

Quick Connection Systems P5



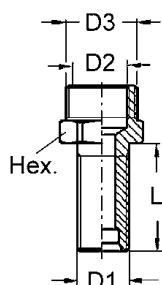
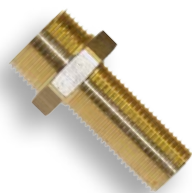
 D	S	WABCO #
M16×1.5	P5	893 550 001 4

CONVENTIONAL COUPLINGS - STRAIGHT CONNECTORS

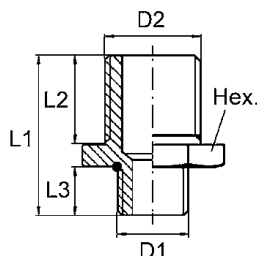


Coupling Catalogue

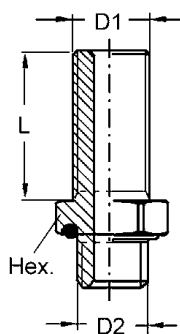
Conventional Couplings - Straight Connectors



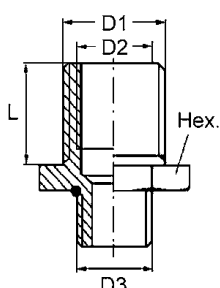
1	D		L1	Hex.	WABCO #
	2	3			
M16×1.5	M16×1.5	M22×1.5	34	24	893 104 065 4
M18×1.5	M16×1.5	-	34	24	893 820 000 2
M16×1.5	M16×1.5	-	34	24	893 820 009 2



1	D	L			Hex.	WABCO #
		1	2	3		
M16×1.5	M16×1.5	39	24	9	22	893 890 820 0
M16×1.5	M22×1.5	-	-	-	24	893 280 004 2



D1	D2	L	Hex.	WABCO #
M12×1.5	M14×1.5	24	20	893 100 001 2
M12×1.5	M12×1.5	24	18	893 104 053 2
M16×1.5	M16×1.5	20	22	893 104 054 2
M16×1.5	M16×1.5	35	22	893 104 055 2
M22×1.5	M16×1.5	24	28	893 104 291 2
M16×1.5	M16×1.5	24	22	893 104 772 2
M22×1.5	M22×1.5	24	28	893 104 773 2
M22×1.5	M16×1.5	24	28	893 104 774 2
M16×1.5	M16×1.5	40	22	893 104 790 2
M12×1.5	M16×1.5	19.5	22	893 104 795 2

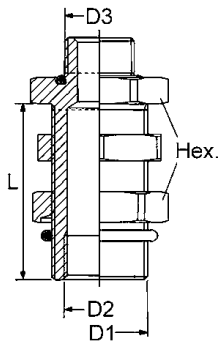


1	D		L	Hex.	WABCO #
	2	3			
M22×1.5	M16×1.5	M22×1.5	40	28	893 104 056 2
M22×1.5	M16×1.5	M16×1.5	40	28	893 104 061 2
M22×1.5	M16×1.5	M16×1.5	24	28	893 104 292 2
M22×1.5	M16×1.5	M22×1.5	24	28	893 104 294 2
M22×1.5	M16×1.5	1/2-14 NPTF*	24	28	893 104 800 2

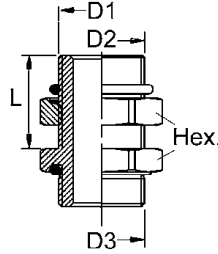
*without O-ring sealing on thread



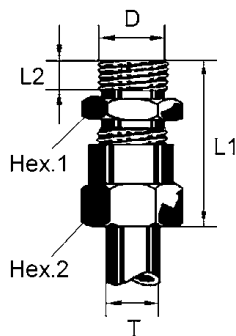
Conventional Couplings - Straight Connectors



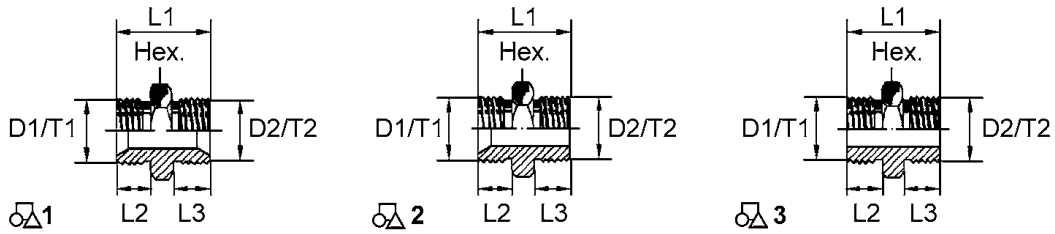
1	D		↔ L	Hex.	WABCO #
	2	3			
M22×1.5	M16×1.5	M16×1.5	40	28	893 100 002 4



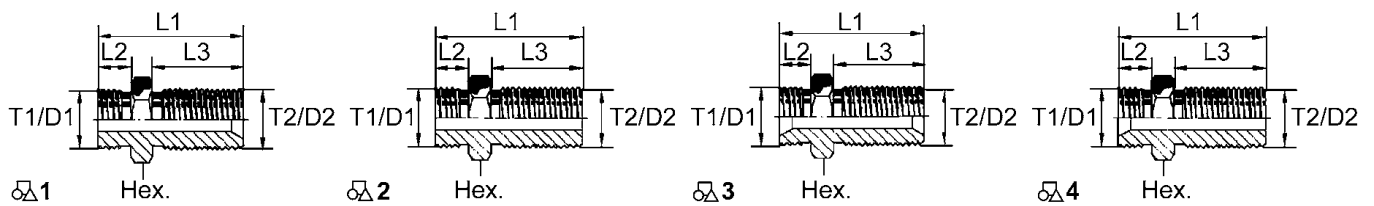
1	D		↔ L	Hex.	WABCO #
	2	3			
M22×1.5	M16×1.5	M22×1.5	24	28	893 104 296 2
M22×1.5	M16×1.5	M16×1.5	24	28	893 104 297 2



Ø T	D	↔ L		Hex.		WABCO #
		1	2	1	2	
6	M12×1.5	37	10	17	14	893 800 014 0
6	M22×1.5	37	12	27	14	893 800 022 0
6	M10×1	31	8	14	14	893 800 294 0
6	M16×1.5	36	12	22	14	893 809 010 0
8	M22×1.5	40	12	27	17	893 800 224 0
8	M12×1.5	35	10	17	17	893 800 234 0
8	M14×1.5	35	10	17	17	893 800 244 0
8	M16×1.5	36	12	-	22	893 809 020 0
8	M10×1	33	8	17	17	893 800 304 0
8	R1/4"	36	12	17	17	893 800 894 0
8	R1/4"-18NPTF	38	15,1	17	17	893 800 904 0
8	R1/8"	31	8	17	17	893 800 994 0
10	M12×1.5	39	10	19	19	893 800 044 0
10	M22×1.5	40	12	27	19	893 800 101 0
10	M22×1.5	40	12	27	19	893 800 109 0
10	M10×1	35	8	19	19	893 800 914 0
10	M16×1.5	37	12	22	19	893 801 994 0

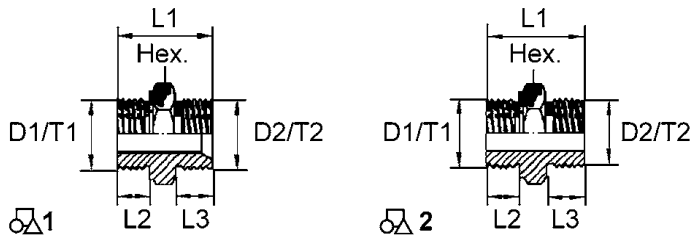


Ø T1	D1	Ø T2	D2	L			Hex.	Figure	WABCO #
				1	2	3			
-	M12×1.5	-	M10x.10	23	10	8	14	2	893 100 921 4
6	M12×1.5	6	M12×1.5	26	10	10	17	1	893 100 064 4
6	M12×1.5	8	M14×1.5	25	10	10	14	1	893 100 624 4
6	M12×1.5	10	M16×1.5	26	10	11	17	1	893 100 510 4
6	M12×1.5	12	M22×1.5	28	10	12	27	2	893 100 024 4
8	M14×1.5	15	M22×1.5	30	10	12	27	2	893 100 554 4
10	M14×1.5	10	M14×1.5	25	10	10	14	1	893 100 614 4
10	M16×1.5	10	M16×1.5	27	11	11	17	1	893 100 204 4
10	M16×1.5	-	M22×1.5	29	11	12	27	2	893 100 138 4
12	M18×1.5	12	M18×1.5	28	11	11	19	1	893 102 314 4
12	M18×1.5	-	M22×1.5	30	12	12	27	2	893 100 431 4
-	M22×1.5	-	M22×1.5	30	12	12	27	3	893 100 035 4
12	M18×1.5	-	1/4"-NPTF	32	11	15	27	2	893 900 021 4
12	M18×1.5	-	M16×1.5	29	11	12	22	2	893 900 014 4
12	M18×1.5	-	M22×1.5	29	11	12	27	2	893 900 017 4
14	M22×1.5	14	M22×1.5	39	16	16	26	3	893 104 477 4
15	M22×1.5	15	M26×1.5	30	12	12	32	3	893 100 174 4
-	M22×1.5*	-	M22×1.5	30	12	12	27	3	893 100 031 4



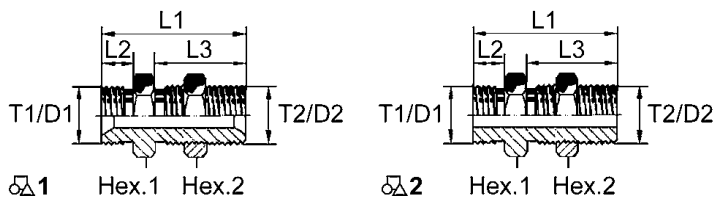
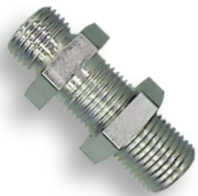
Ø T1	D1	Ø T2	D2	L			Hex.	Figure	WABCO #
				1	2	3			
9	M16×1.5	10	M18×1.5	54	12	34	22	1	893 103 220 4
10	M16×1.5	10	M16×1.5	52	11	35	22	3	893 100 834 4
10	M16×1.5	12	M22×1.5	54	34	12	27	2	893 103 900 4
12	M18×1.5	-	M16×1.5	50	11	34	22	4	893 900 015 4
-	M18×1.5	12	M18×1.5	50	11	34	22	1	893 900 016 4
12	M22×1.5	8	M16×1.5	52	12	35	27	1	893 100 330 4
12	M22×1.5	12	M22×1.5	54	12	34	27	2	893 100 224 4
12	G 1/2A	12	M22×1.5	54	12	34	27	2	893 100 264 4

Conventional Couplings - Straight Connectors



Ø T1	D1	Ø T2	D2	L			Hex.	Figure	WABCO #
				1	2	3			
4	M10×1.0	6	M14×1.5	23	8	10	17	1	893 100 960 4
4	M12×1.5	10	M16×1.5	28	10	11	19	1	893 100 074 4
6	M12×1.5	8	M14×1.5	27	10	10	17	1	893 100 564 4
12	M18×1.5	10	M18×1.5	25	10	10	27	1	893 100 110 4
-	M16×1.5	-	M22×1.5	30	12	12	24	2	893 101 164 4
-	R 3/4"	-	M22×1.5	35	15	12	32	2	893 100 180 4
-	R 1/2"	-	M22×1.5	30	12	12	27	2	893 100 164 4
-	R1/4"×18 NPT	-	M22×1.5	33	15.1	12	24	2	893 100 790 4
-	M22×1.5	10	M16×1.5	29	12	11	27	1	893 100 340 4
-	M14×1.5*	8	M14×1.5	25	10	10	17	1	893 100 644 4
-	M12×1.5	12	M18×1.5	26	10	11	19	1	893 102 224 4
-	M16×1.5	12	M18×1.5	27	12	11	22	1	893 102 244 4
-	M22×1.5	12	M18×1.5	29	12	11	27	1	893 102 254 4

*with space for strainer



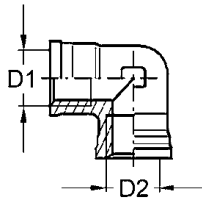
Ø T1	D1	Ø T2	D2	L			Hex.		Figure	WABCO #
				1	2	3	1	2		
10	M16×1.5	10	M16×1.5	52	11	35	22	22	1	893 890 570 0
-	M22×1.5	-	M22×1.5	54	12	34	27	27	2	893 890 014 0
-	M22×1.5	-	M12×1.5	40	12	23	27	19	2	893 890 030 0
-	G 1/2"	-	M22×1.5	54	12	34	27	27	2	893 890 040 0

CONVENTIONAL COUPLINGS - ELBOWS

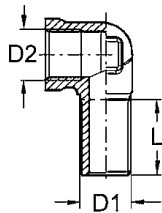


Coupling Catalogue

Conventional Couplings - Elbows

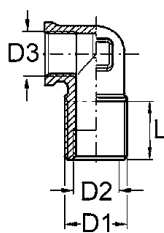


D1	D2	WABCO #
M12×1.5	M12×1.5	893 401 011 4
M16×1.5	M16×1.5	893 401 012 4
M16×1.5	M18×1.5	893 400 002 4
M22×1.5	M22×1.5	893 401 013 4



D1	D2	\longleftrightarrow L	WABCO #
M12×1.5	M12×1.5	18	893 401 008 4
M16×1.5	M16×1.5	22	893 401 292 4
M16×1.5	M16×1.5	24	893 401 774 4
M16×1.5*	M16×1.5	23	893 890 860 0
M16×1.5	M22×1.5	24	893 401 775 4
M22×1.5	M22×1.5	25	893 401 769 4
M22×1.5*	M22×1.5	25	893 890 450 0

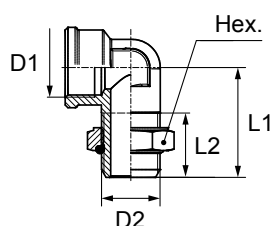
*with nut and O-ring



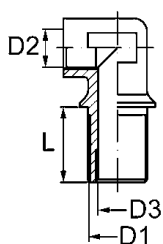
D1	D2	D3	\longleftrightarrow L	WABCO #
M22×1.5	M16×1.5	M16×1.5	20	893 401 293 4



Conventional Couplings - Elbows

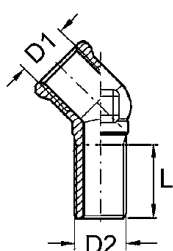
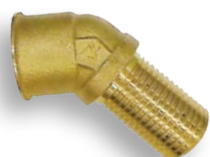


D		L		Hex.	WABCO #
1	2	1	2		
M16×1.5	M22×1.5	36	23	28	893 401 770 0
M22×1.5	M22×1.5	41	24	28	893 401 019 0

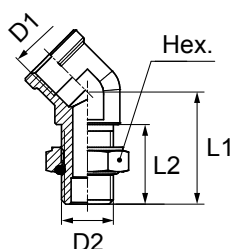


D1	D2	D3	L	WABCO #
M22×1.5	M16×1.5	M16×1.5	25	890 159 581 4
M26×1.5*	18	M22×1.5	32	893 401 826 2

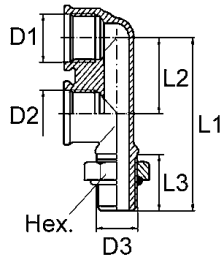
*with nut and O-ring



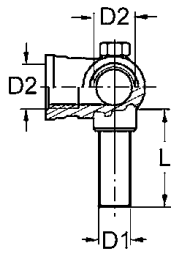
D1	D2	L	WABCO #
M16×1.5	M16×1.5	24	893 401 783 4
M22×1.5	M22×1.5	23	893 401 782 4



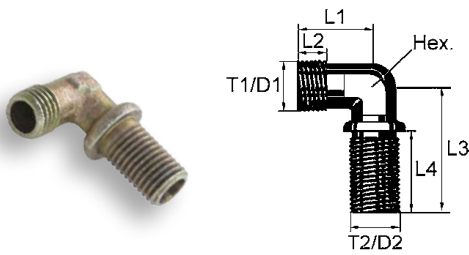
D		L		Hex.	WABCO #
1	2	1	2		
M16×1.5	M16×1.5	34.5	22.5	22	893 831 747 0



1	D			L			Hex.	WABCO #
	2	3	1	2	3			
M16×1.5	M16×1.5	M16×1.5	63.3	26	24	22	893 831 320 0	
M16×1.5	M16×1.5	M22×1.5	65	26	25	28	893 831 330 0	
M16×1.5	M16×1.5	M22×1.5	80	40	24	-	890 159 597 4	

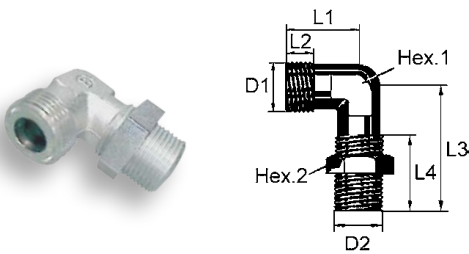


D1	D2	L	WABCO #
M16×1.5	M16×1.5	21	893 401 014 4
M22×1.5	M16×1.5	24	890 159 594 4



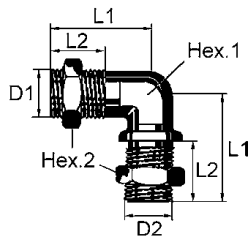
Ø T1	D1	Ø T2	D2	↔ L				Hex.	WABCO #
				1	2	3	4		
6*	M12×1.5	6	M12×1.5	19	10	33.5	19.5	12	893 400 035 4
8	M14×1.5	6	M12×1.5	22	7	38	20	12	893 400 134 4
10	M18×1.5	12	M22×1.5	32	11	45	25	19	893 400 510 4
12	M22×1.5	12	M22×1.5	33	12	45	25	19	893 400 054 4
12	M22×1.5	15	M26×1.5	36	11	47	25	24	893 400 124 4
-	M22×1.5	-	M22×1.5	36	20	48	25	19	893 400 235 4
-	M18×1.5	10	M18×1.5	24	8	56	36	17	893 400 520 4

* with collar



D		↔ L				Hex.		WABCO #
1	2	1	2	3	4	1	2	
M22×1.5	M22×1.5	36	17	48	25	27	27	893 890 063 0
M22×1.5	M22×1.5	33	12	45	25	27	27	893 890 074 0
M22×1.5	M22×1.5	33	12	51	34	19	27	893 890 081 0

Conventional Couplings - Elbows



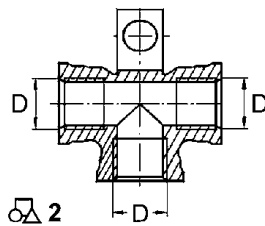
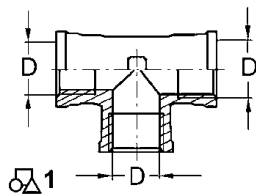
D	L		Hex.		WABCO #
	1	2	1	2	
M22×1.5	45	25	19	27	893 890 641 0



CONVENTIONAL COUPLINGS - T CONNECTORS

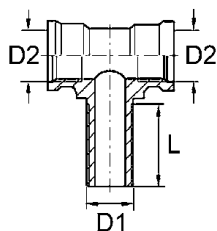




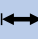


Coupling Catalogue

Conventional Couplings - T Connectors

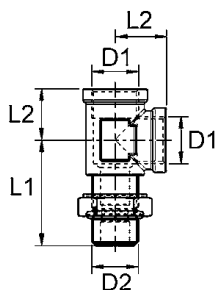



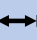




 D	 Figure	WABCO #
M12×1.5	1	893 501 005 4
M16×1.5	1	893 501 191 4
M16×1.5	2	893 501 004 4
M22×1.5	1	893 501 197 4



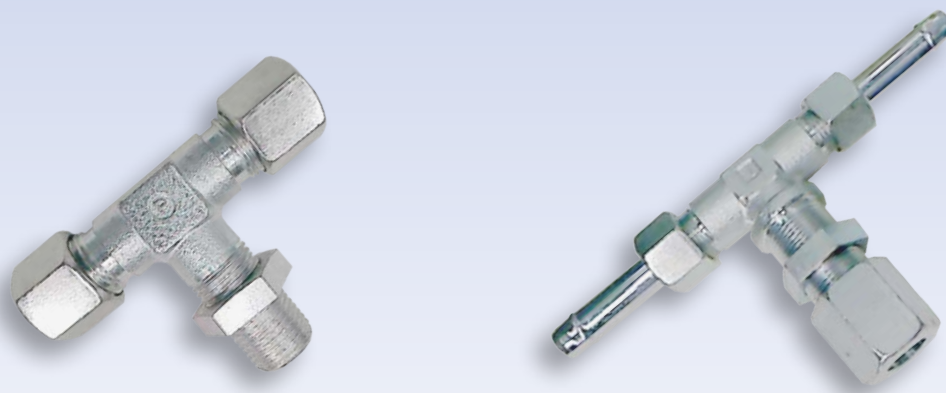
 D1	 D2	 L	WABCO #
M12×1.5	M12×1.5	18	890 159 584 4
M16×1.5	M16×1.5	21	893 501 001 4
M16×1.5	M16×1.5	-	893 501 794 4
M22×1.5	M16×1.5	-	893 501 795 4
M22×1.5	M16×1.5*	-	893 851 380 0
M22×1.5	M16×1.5	24	890 159 586 4
 M22×1.5	M16×1.5	-	890 159 588 4
 M16×1.5	M16×1.5	-	

*with counternut and O-Ring

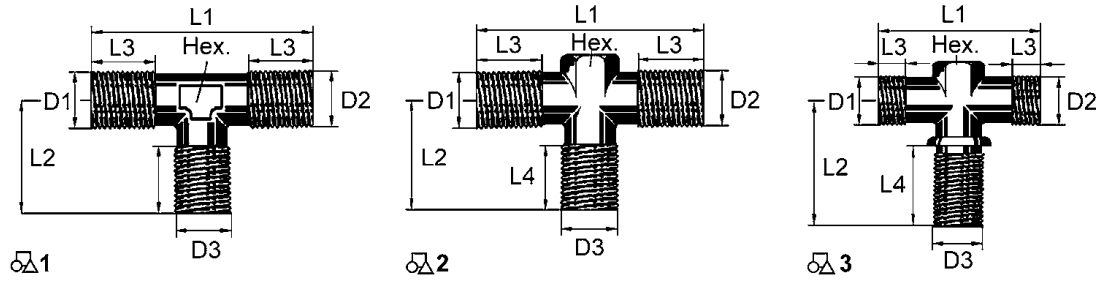


	 D	 L		WABCO #
		1	2	
M16×1.5	M16×1.5	37	21	890 159 590 4
M16×1.5	M16×1.5*	36	17.5	893 851 390 0
M16×1.5	M16×1.5	37.5	19.5	893 401 784 4
M16×1.5	M16×1.5	-	-	893 501 385 4
M16×1.5	M22×1.5	38	19.5	893 401 785 4
M16×1.5	M22×1.5*	38	19.5	893 851 400 0
M16×1.5	 M22×1.5  M16×1.5	50	21	890 159 592 4
M16×1.5	 M22×1.5  M16×1.5	-	-	893 501 384 4

*with counternut and O-Ring



Conventional Couplings - T Connectors



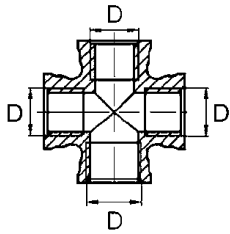
1	D			L				Hex.	Figure	WABCO #
	2	3	1	2	3	4				
M16×1.5	M16×1.5	M16×1.5	48	24	8	8	17	1	893 500 094 4	
M22×1.5	M22×1.5	M22×1.5	84	42	24	24	19	2	893 500 044 4	
M22×1.5	M22×1.5	M22×1.5	70	54	12	34	19	3	893 500 064 4	

CONVENTIONAL COUPLINGS - DISTRIBUTION BLOCKS

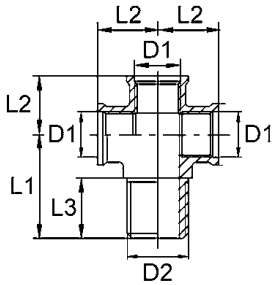


Coupling Catalogue

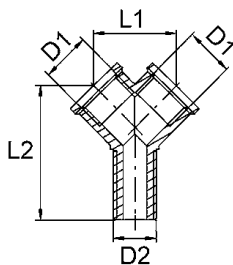
Conventional Couplings - Distribution Blocks



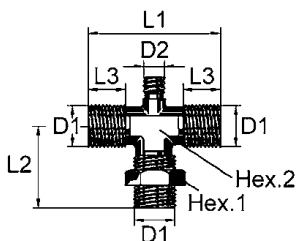
D		WABCO #
M12×1.5		893 500 001 4
M16×1.5		893 550 101 4



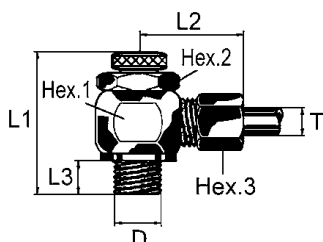
D		L			WABCO #
1	2	1	2	3	
M16×1.5	M22×1.5	37	20.5	25	893 550 053 4



D		L		WABCO #
1	2	1	2	
M16×1.5	M16×1.5	27.5	45	893 401 786 4
M16×1.5	M22×1.5	27.5	38	893 401 787 4

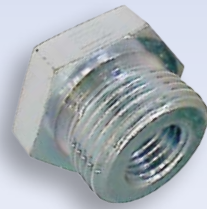
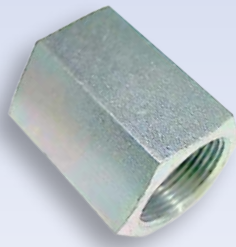


D		L			Hex.		WABCO #
1	2	1	2	3	1	2	
M22×1.5	M12×1.5	62	42	9	27	19	893 890 120 0



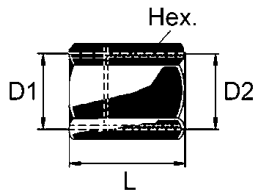
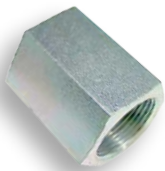
∅ T	D	L			Hex.			WABCO #
		1	2	3	1	2	3	
8×1	M12×1.5	32	24	8	20	17	14	893 900 147 0
8×1	M12×1.5	32	24	8	20	17	14	893 900 765 0

CONVENTIONAL COUPLINGS - NUTS / REDUCER

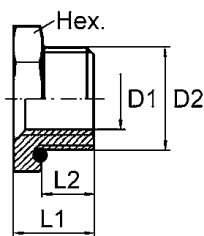
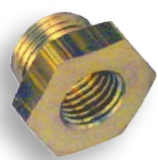


Coupling Catalogue

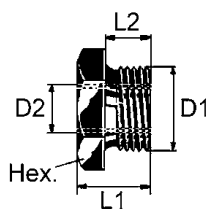
Conventional Couplings - Nuts / Reducer



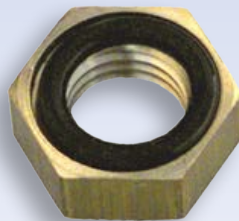
D		L		Hex.	WABCO #
1	2	1	2		
M10×1.0	M12×1.5	30		14	893 240 010 4
M10×1.0	M16×1.5	30		19	893 240 090 4
M12×1.5	M12×1.5	35		17	893 240 224 4
M12×1.5	M14×1.5	30		19	893 240 230 4
M12×1.5	M16×1.5	30		19	893 240 210 4
M14×1.5	M14×1.5	25		19	893 300 024 4
M16×1.5	M16×1.5	20		19	893 240 400 4
M18×1.5	M22×1.5	26		27	893 240 160 4
M22×1.5	M22×1.5	38		27	893 300 011 4
M22×1.5	M22×1.5	25		27	893 300 012 4
M22×1.5	R 1/2"	35		27	893 240 050 4



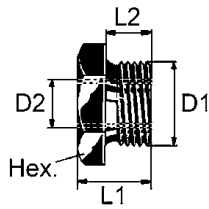
D		L		Hex.	WABCO #
1	2	1	2		
M16×1.5	M12×1.5	15	9	22	893 104 066 4
M22×1.5	M12×1.5	15	9	28	893 104 051 4
M22×1.5	M16×1.5	15	9	28	893 104 052 2
M22×1.5	M16×1.5	15	9	28	893 209 062 2



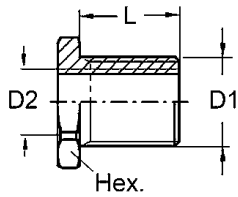
D		L		Hex.	WABCO #
1	2	1	2		
M14×1.5	R1/4"	29	11	19	893 181 340 4
M18×1.5	M10×1.0	19	12	27	893 181 170 4
M18×1.5	M12×1.5	16	10.5	24	893 181 230 4
M22×1.5	M12×1.5	18	12	27	893 180 600 4
M22×1.5	M12×1.5	18	12	27	893 180 604 4
M22×1.5	M14×1.5	18	12	27	893 181 190 4
M22×1.5	M14×1.5	18	12	27	893 181 194 4



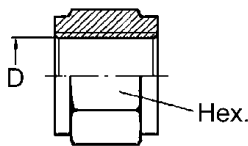
Conventional Couplings - Nuts / Reducer



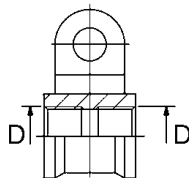
D		L		Hex.	WABCO #
1	2	1	2		
M22×1.5	M16×1.5	15	12	27	893 183 340 4
M22×1.5	M16×1.5	19	12	27	893 181 184 4
M22×1.5	R1/4"	19	12	27	893 181 214 4
R1"	M22×1.5	30	20	46	893 181 200 4
R1/2"	R1/4"	20	14	22	893 200 240 4



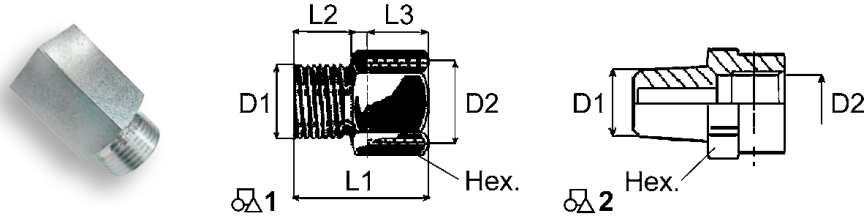
D		L		Hex.	WABCO #
1	2	1	2		
M16×1.5	M10×1.0	20	-	22	893 100 000 4
M16×1.5	M10×1.0	20	-	22	893 104 057 4
M16×1.5	M10×1.0	35	-	22	893 100 004 4
M22×1.5	M16×1.5	30	24	27	893 184 676 4
M22×1.5	M16×1.5	30	24	28	893 184 677 4
M22×1.5	M16×1.5	24	-	28	893 104 058 4



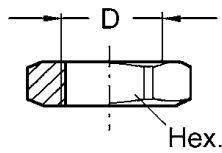
D	Hex.	WABCO #
M12×1.5	18	893 104 063 4
M16×1.5	22	893 104 064 4
M22×1.5	28	893 209 073 4



D	WABCO #
M16×1.5	893 500 000 4

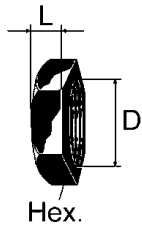
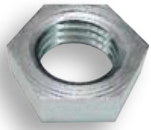


Ø T1	D		L			Hex.	Figure	WABCO #
	1	2	1	2	3			
8	M14×1.5	M22×1.5	29	10	14	27	1	893 180 544 4
8	M14×1.5	M14×1.5	25	10	12	19	1	893 180 654 4
16	M26×1.5	M22×1.5	30	12	14	32	1	893 180 880 4
-	M12×1.5	M10×1.0	24	9	13	17	1	893 180 130 4
-	M12×1.5	M22×1.5	28	10	12	27	1	893 180 054 4
10	M16×1.5	M12×1.5	27	11	12	17	1	893 180 040 4
-	M16×1.5	M16×1.5	62	50	10	22	1	452 200 888 4
10	M16×1.5	M22×1.5	28	7	12	27	1	893 180 034 4
-	M16×1.5	G3/8H	32	12	12	22	1	893 183 970 4
-	M22×1.5	M14×1.5	20	10	12	19	1	893 182 290 4
15	M22×1.5	M22×1.5	44	12	25	27	1	893 180 080 4
-	M22×1.5	R1/4"	40	13.5	20	27	1	893 181 090 4
-	M22×1.5*	R3/8"	32	12	11	27	1	893 180 194 4
-	M22×1.5	G3/8 ISO 228	32	12	15	27	1	893 180 510 4
-	M22×1.5	G1/2"	30	12	14	27	1	893 180 184 4
-	1/4"-18 NPTF*	M12×1.5	-	-	-	18	2	893 104 801 2
-	3/8"-18 NPTF*	M16×1.5	-	-	-	-	2	893 820 005 4
-	G3/8A ISO 228	M22×1.5	26	10	12	27	1	893 180 013 4



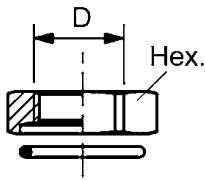
D	Hex.	WABCO #
M12×1.5	17	893 500 004 4
M14×1.5	19	893 500 005 4
M16×1.5	22	891 503 003 4
M16×1.5	22	893 500 006 4
M16×1.5	22	891 503 050 4
M18×1.5	19	891 503 005 4
M18×1.5	24	893 500 007 4
M22×1.5	27	893 500 008 4
M22×1.5	28	891 503 051 4
M22×1.5	28	891 503 076 4

Conventional Couplings - Nuts / Reducer



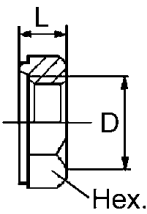
Hex.

D	\leftrightarrow L	Hex.	Standard	WABCO #
M12×1.5	6	17	DIN80705	810 315 002 4
M14×1.5	6	19	DIN80705	810 315 003 4
M16×1.5	6	22	DIN80705	810 315 004 4
M18×1.5	6	24	DIN80705	810 315 005 4
M22×1.5	8	27	DIN80705	891 500 454 4
M26×1.5	8	32	DIN80705	891 500 464 4



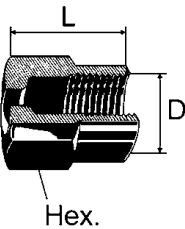
Hex.

D	Hex.	WABCO #
M12×1.5	18	891 503 000 2
M14×1.5	20	893 400 001 4
M16×1.5	22	891 503 075 2
M18×1.5	24	893 500 003 2
M22×1.5	28	891 503 076 2



Hex.

D	\leftrightarrow L	Hex.	O-ring	WABCO #
M16×1.5	8	22	897 073 077 4	891 503 053 4
M22×1.5	8	28	897 073 076 4	891 503 052 4



Hex.

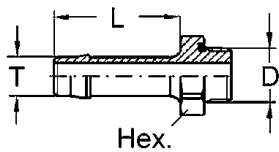
D	For pipe Ø	\leftrightarrow L	Hex.	Standard	WABCO #
M12×1.5	6	14.5	14	DIN3870	893 070 054 4
M14×1.5	8	14.5	17	DIN3870	893 070 104 4
M16×1.5	10	15.5	19	DIN3870	893 070 074 4
M18×1.5	12	15.5	22	DIN3870	893 070 834 4
M22×1.5	-	17	27	-	893 070 094 4
M22×1.5	15	27	27	DIN3872	893 070 065 4

CONVENTIONAL COUPLINGS - HOSE FITTINGS

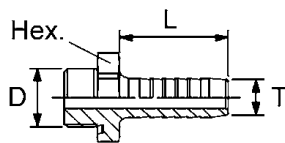


Coupling Catalogue

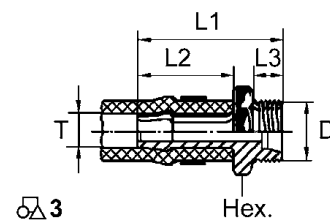
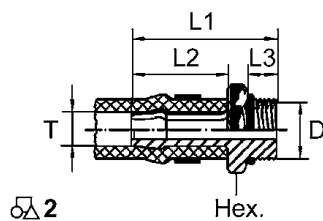
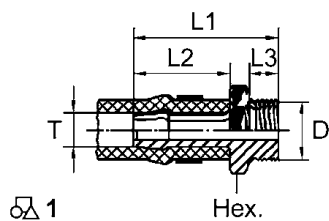
Conventional Couplings - Hose Fittings



\varnothing T	D	L	Hex.	WABCO #
11×3.5	M16×1.5	36	22	893 129 413 2
11×3.5	M16×1.5	40	22	893 129 194 2
11×3.5	M16×1.5	40	22	893 129 401 2
11×3.5	M22×1.5	32	28	893 129 195 2
11×3.5	M22×1.5	36	28	893 129 414 2
11×3.5	M22×1.5	40	28	893 129 402 2
13×6	M16×1.5	35	22	893 129 445 2
13×6	M16×1.5	36	22	893 129 410 2
13×6	M16×1.5	40	22	893 129 403 2
13×6	M22×1.5	40	28	893 129 404 2
13×6	M22×1.5	40	28	893 129 446 2
13×6	M22×1.5	52	28	893 129 415 2
11.5	M22×1.5	31	28	893 129 374 2
16	M22×1.5	31	28	893 129 375 2



\varnothing T	D	L	Hex.	WABCO #
10	M16×1.5	30	-	893 120 008 2
11×3.5	M16×1.5	30	22	893 120 018 2
13×6	M16×1.5	30	22	893 129 442 2
13×6	M22×1.5	30	28	893 129 443 2



\varnothing T	D	Pipe \varnothing	L			Hex.	Figure	WABCO #
			1	2	3			
11	M16×1.5	10	47	30	11	19	3	893 120 164 4
11.5	M16×1.5	-	47	31	9	22	2	893 129 373 2
16	M16×1.5	-	47	31	9	22	2	893 120 410 2



Conventional Couplings - Hose Fittings

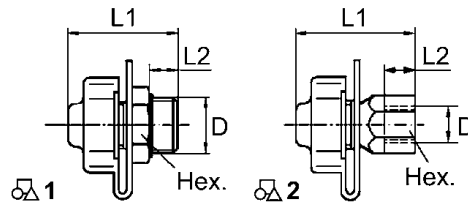
T	D	Pipe Ø	L			Hex.	Figure	WABCO #
			1	2	3			
13	M16×1.5	-	60	40	12	22	1	893 121 641 4
13×6	G1/2AISO228	-	60	40	12	27	1	893 120 204 4
14	M22×1.5	-	60	40	12	27	1	893 120 170 4



TEST CONNECTIONS



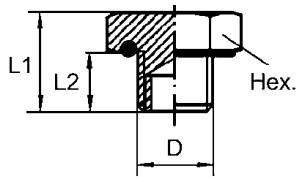
Coupling Catalogue


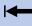


Test Connections



 D	\longleftrightarrow L1	\longleftrightarrow L2	 Hex.	O-Ring	 Figure	WABCO #
M12×1.5	38	7	17	✗	2	463 703 116 0
M14×1.5	38	7	17	✗	2	463 703 118 0
M16×1.5	36	9	22	✓	1	463 703 114 0
M16×1.5	36	9	22	✓	1	463 703 120 0
M16×1.5*	36	10	17	✓	1	463 705 105 0
M18×1.5	39	8	24	✗	2	463 703 119 0
M22×1.5	36	9	28	✓	1	463 703 115 0
M22×1.5	41.5	10	27	✗	2	463 703 117 0
M22×1.5	36	9	28	✗	1	463 703 125 0
M22×1.5	36	10	27	✗	1	463 705 103 0
1/4"-18NPTF	36	12	17	-	1	463 705 102 0

* conic 1:16



 D	 L1	 L2	 Hex.	WABCO #
M12×1.5	14	8	18	893 022 000 2
M14×1.5	-	-	-	893 022 022 2
M16×1.5	-	-	22	893 022 014 4
M22x.15	15	9	28	893 022 015 4
M22×1.5	15	9	2	893 022 009 4